



// **SELFIE for work-based learning.**

**A tool to support VET institutions and companies become fit for the digital age**

**FORUM ON  
VOCATIONAL  
EXCELLENCE**

**#copcoves  
#europeanyearofskills**

**Cesar Herrero, PhD**  
**European Commission**  
**Joint Research Centre**

**2023**

**KATA  
PULT**  
next level  
connection

**Tknika**  
Evropské centrum pro aplikativní výzkum  
Centre de Investigación Aplicada en FP Liskadi  
Baque VET Applied Research Centre



**COP  
LUVES**  
Community of Practice  
Centres of Vocational Excellence



# Science for policy



ANTICIPATE



INTEGRATE

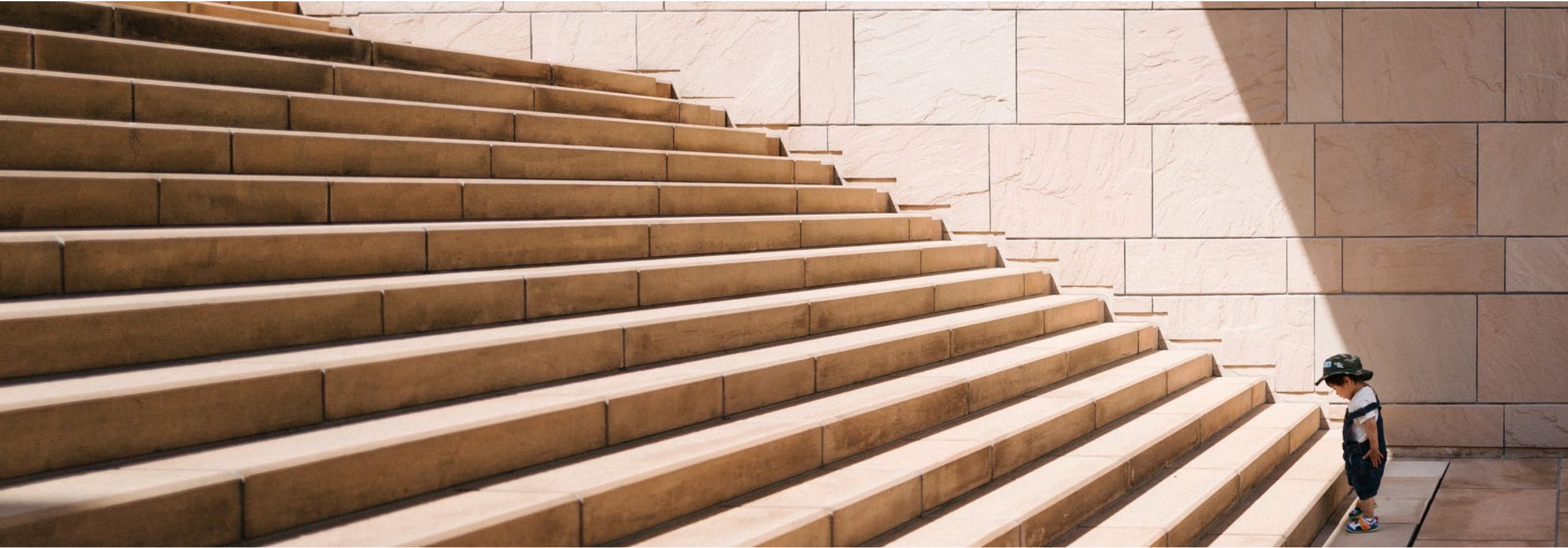


IMPACT

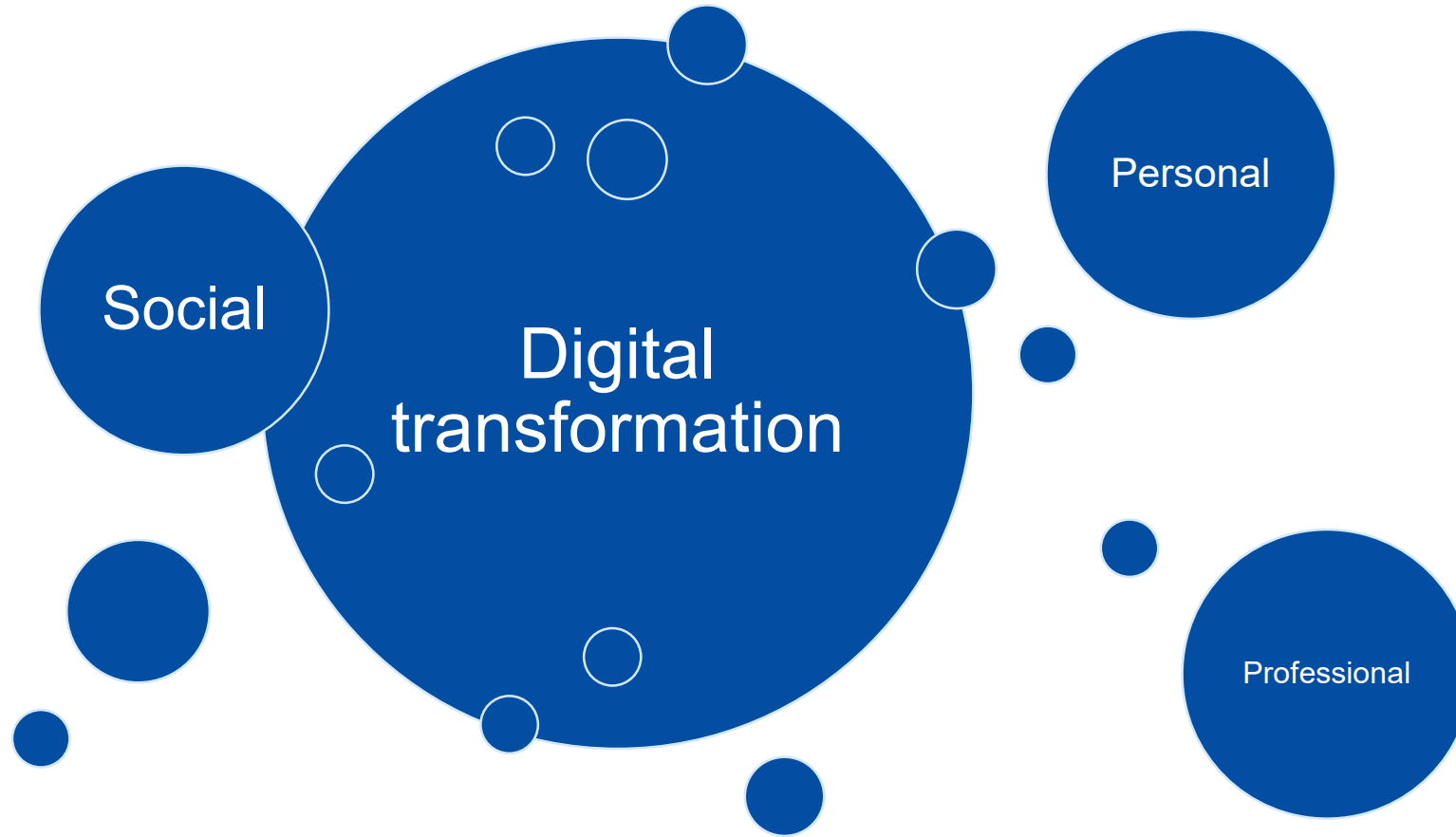
## Our purpose

The Joint Research Centre provides independent, evidence-based knowledge and science, supporting EU policies to positively impact society.

# Society is facing many challenges

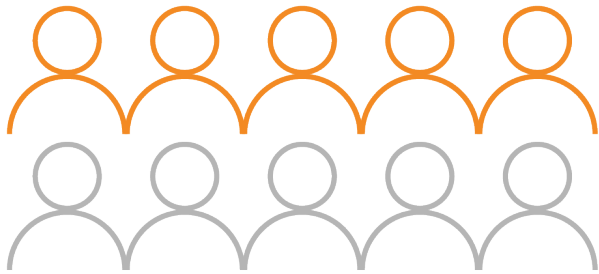


# One key challenge



# Some data

The Digital Economy and Society Index (DESI) shows that **5 out of 10 adults** and **every third person** who works in Europe **lack basic digital skills**.

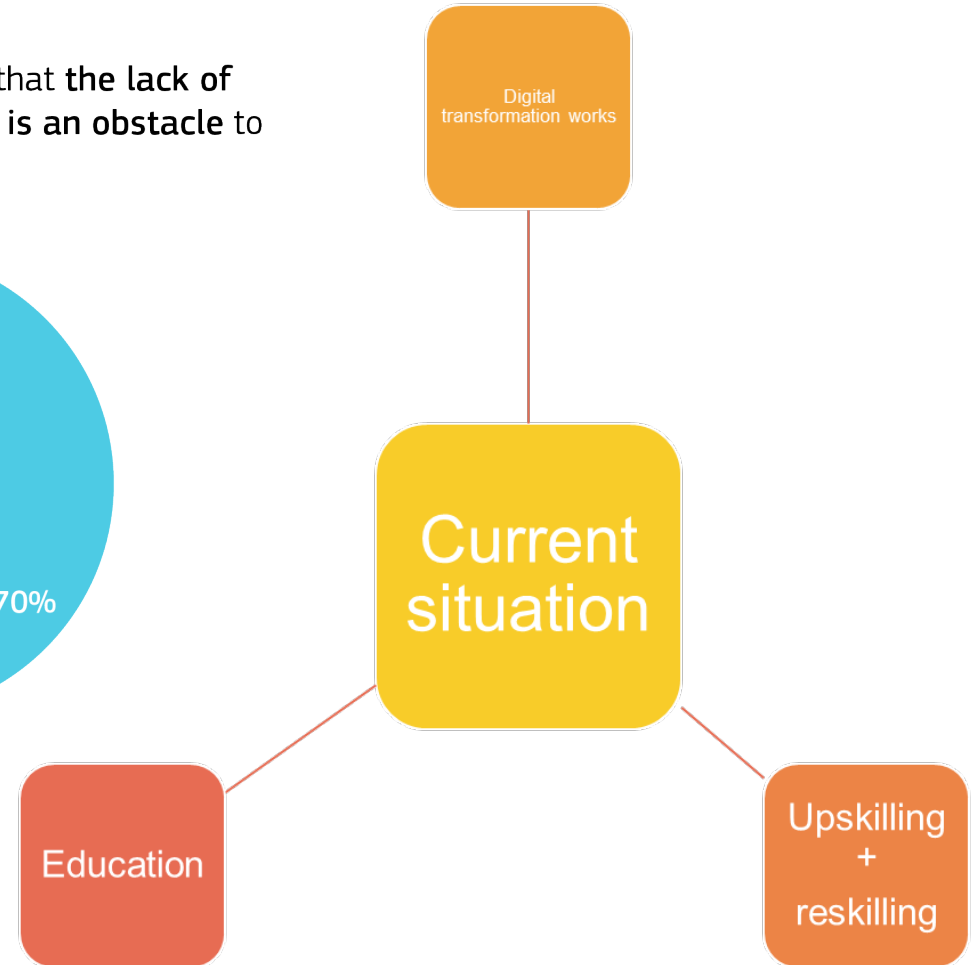
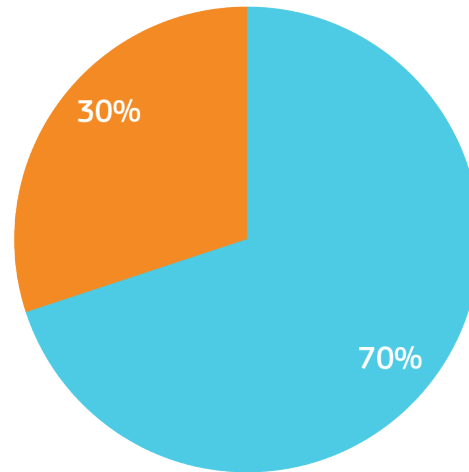


5 out of 10 adults lack basic digital skills



Every third person lack basic digital skills

Over **70%** of business have said that the **lack of staff with adequate digital skills is an obstacle** to investment.

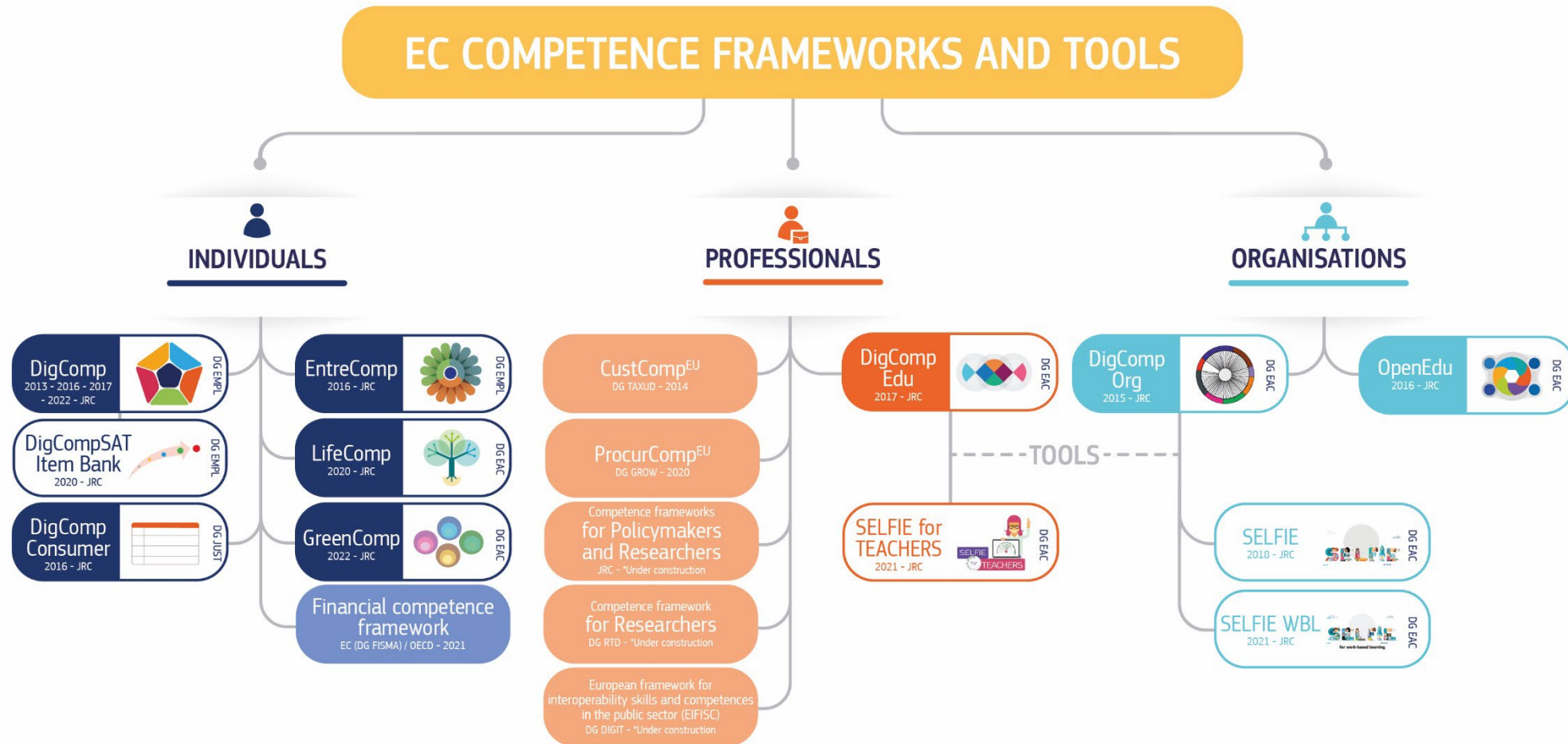


# Digital transformation of VET sector

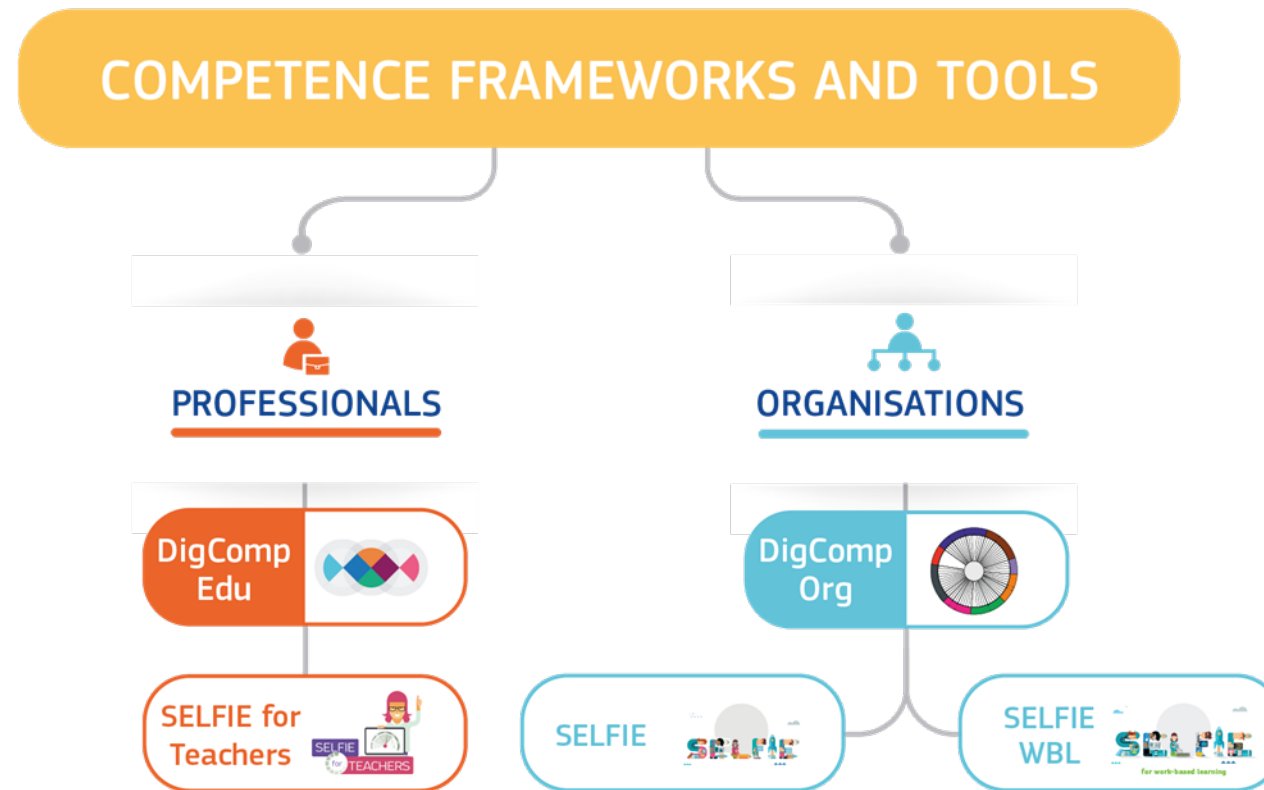
## Challenges and support to EU policies

- Need for digitization of the VET sector (2020 CR on VET + 2020 Osnabruck Declaration)
- Skills to support the twin transition, better equipped future workforce (2020 European Skills Agenda)

# Education plays a key role



# Educational frameworks and tools





# SELFIE for work-based learning – SELFIE WBL

[SELFIE for work-based learning | European Education Area \(europa.eu\)](https://education.ec.europa.eu/selfie/selfie-for-work-based-learning)

<https://education.ec.europa.eu/selfie/selfie-for-work-based-learning>

**SELFIE for work-based learning**  
a tool to support VET schools and companies in the digital age

**WHY ARE DIGITAL TECHNOLOGIES IMPORTANT FOR LEARNING?**

- 43%** of Europeans lack basic digital skills
- 90%** of future jobs will require digital skills
- Digital tech** is part of our everyday lives, and should be an essential part of our learning practices
- VET students** attending VET schools in Europe need to develop their skills for the digital society
- VET schools & companies** in Europe need to prepare their students for the digital society
- Teachers & trainers** in Europe should make the most of technology to support their pedagogical practice

**SELFIE WBL: Connecting VET institutions and companies for the digital development of Vocational Education and Training**

VET institutions (teachers+students+school leaders), trainers and companies can use this **free, anonymous, online tool** to:

- reflect jointly on their use of digital technologies for education and training
- plan for improvement
- monitor progress

Improving the use of **digital technologies** in work-based learning improves **employability** and the practical use of digital skills.

**9 in 10** of all jobs require at least some digital skills

**4 in 10** adult Europeans do not have a basic level of these skills

**TESTED, PILOTED, READY TO USE!**

The European Commission, in collaboration with ETF and EFVET, piloted SELFIE WBL in 9 countries

- France, Germany, Hungary, Poland, Romania
- Georgia, Montenegro, Serbia and Turkey

**35,000 participants at**

- 150 Vocational Education and Training schools**
- 250 companies**
- +28,000 learners**
- +5,000 teachers**
- 512 school leaders**
- 372 in-company trainers**

**73%** of those surveyed were satisfied to some extent with **SELFIE WBL**

**81%** are somewhat likely to extremely likely to recommend it to their peers

Participants said **SELFIE WBL** helped them to **reflect on the use of remote learning** – a new area for many schools.

The majority of pilot participants found **SELFIE WBL** to be:

- useful and relevant**
- easy to use and handle**
- understandable and transparent**

# Video on SELFIE WBL



# What is SELFIE WBL? (I)

- **Self-reflection tool** about **the use of digital technologies** in the training system
- It supports VET institutions and companies to make the most of digital technologies for teaching, learning and training. Launched in October 2021
- Adapted to the **specific requirements of WBL** to support VET schools.



# Self-reflection

- School needs support. School-based approach
- Organised and strategic integration of digital technologies
- Allows individuals to increase awareness and knowledge
- Collective self-reflection:
  - Diagnosis. Identify current situation
  - Source of relevant information. All voices heard
  - Understand weakness and strengths
  - Discussion about moving ahead. Evidence-based decisions
  - Have a common reference/language

# What is SELFIE WBL? (II)

- Companies (via **in-Company trainers**) are taken on-board.
- **Connecting** the world of schools with the world of work to better support digital education in VET.
- SELFIE WBL helps VET institutions and companies become **fit for the digital age**.
- It supports the **digital transition** (key priority for the European Commission).

# WHY SELFIE WBL?

- **VET high in the EU Agenda** (Council Recommendation) – there is interest to invest to VET education
- **VET: bridge** between educational world and labour market.
- **SELFIE for WBL: Coordination between schools and companies** on the use of technologies -> Digital education better fit for workplace
- **Feasibility study:** positive results

# Added value

- Solid and reliable tool (scientifically based)
- Collective self-reflection
- Involvement of companies
- Discussion opportunity
- Different voices and perspectives Heard
- Informed decisions
- Identification of current situation, challenges, opportunities...
- Move forward in the use of digital technologies for training

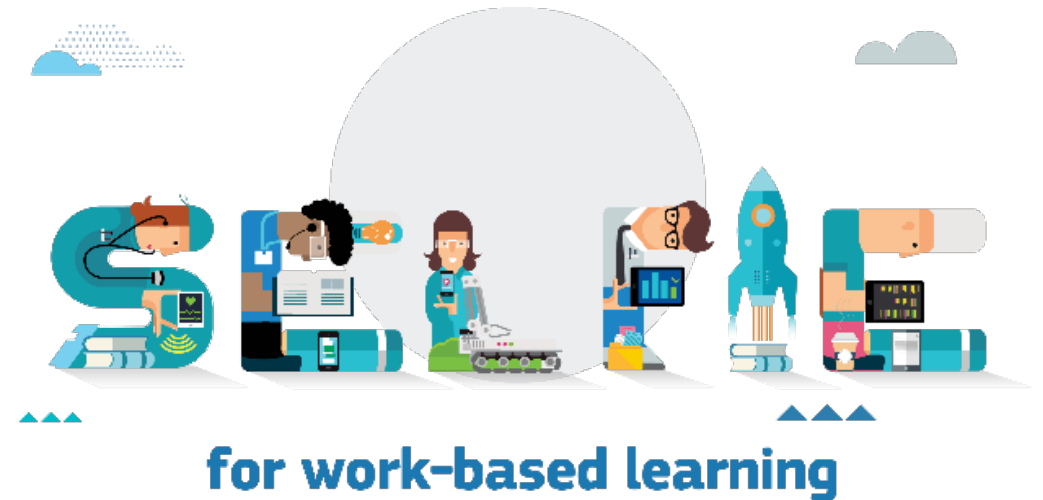
# The “SELFIE WBL” approach

## For VET institutions and companies:

- Collective self-reflection
- Informed decisions

## For policy-makers:

- Picture of the situation
- Design policies



for work-based learning



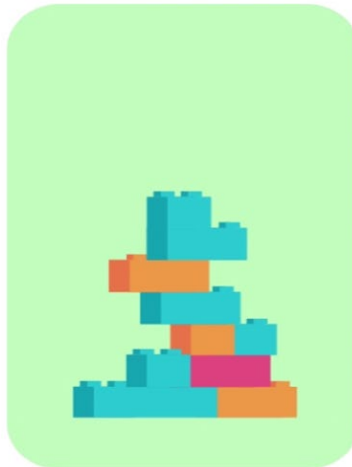
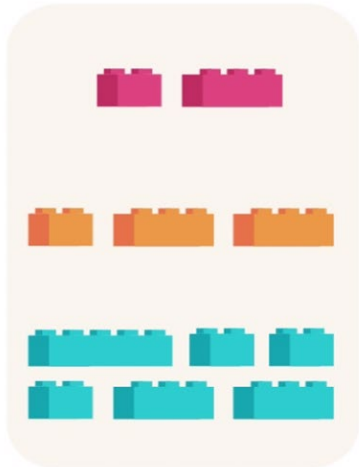
# Any VET institution can use SELFIE WBL



YOUR OWN  
QUESTIONS

OPTIONAL  
QUESTIONS

COMMON  
QUESTIONS



- It doesn't matter how big or small it is.
- It doesn't matter either how advanced or not it is in the use of technologies for teaching and learning.
- Flexible, as every VET institution is different

# Main features

Free of charge	Anonymous + private	Customisable
NO comparison	NO assessment	Current situation
360° view	20-40 minutes	SELFIE WBL report

# Languages in SELFIE WBL



**Website**



**Tool**

# Questions are divided into 8 different areas – School digital capacity



A. Leadership



B. Collaboration and  
Networking



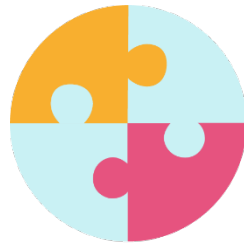
C. Infrastructure



D. Continuing Professional  
Development



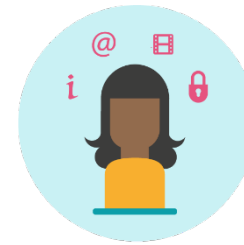
E. Pedagogy:  
Support and Resources



F. Pedagogy:  
Implementation  
in the classroom



F. Assessment Practices

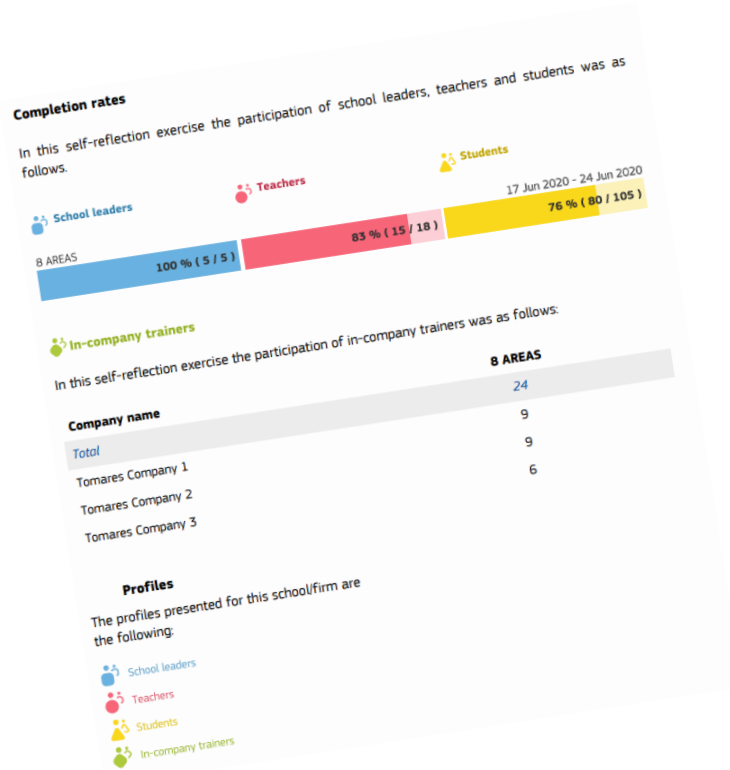


G. Student Digital  
Competence

# STAGES OF COLLECTIVE REFLECTION WITH SELFIE FOR DIGITAL DEVELOPMENT OF THE VET INSTITUTION

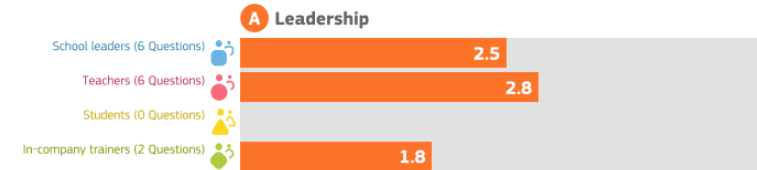


# SELFIE WBL report



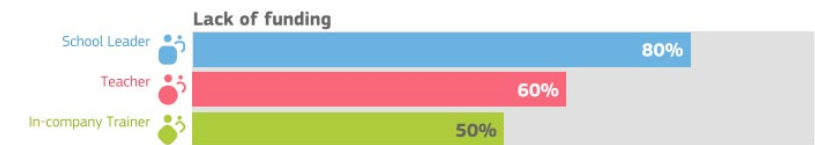
## Overview of areas

The figures below show the average responses by your school leaders, teachers and students for each of the 8 areas.

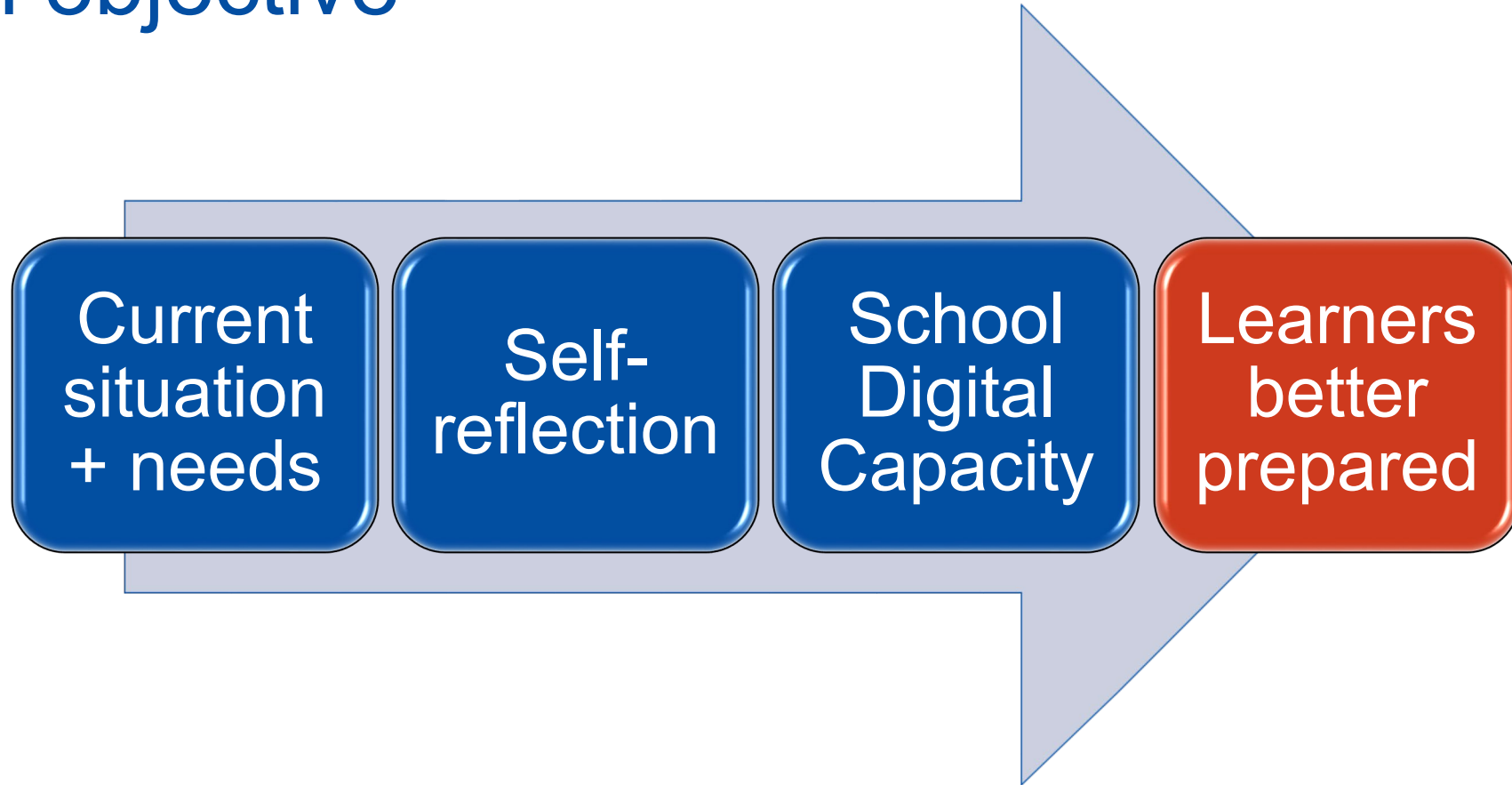


### A. Leadership

This area relates to the role of leadership in the school-wide integration of digital technologies and their effective use for the school's core work: teaching and learning.



# Main objective



- Improving the use of digital technologies in work-based learning improves employability and the practical use of digital skills.

# Quick overview



SELFIE from inside



# Access / Register / Log in

schools-go-digital.jrc.ec.europa.eu/coordinator/login

website of the European Union How do you know? ▾

 English 

European Commission > EU Science Hub > SELFIE > Log in

SELFIE - Discover your school's digital potential

About SELFIE

## Log in as school coordinator

Email

Password

[Forgot password?](#)

# Set up the exercise

European Commission > EU Science Hub > SELFIE > Dashboard

SELFIE - Discover your school's digital potential

About SELFIE **Set-up** Results Certification Resources Upcoming sessions Data protection School profile

## Your self-reflections

> SELFIE 2021-2022, session 2 📅 Thu, 6 Jan 2022 – Fri, 15 Apr 2022

**Steps**

- 1** Select education level + declare participation numbers
- 2** Customise the questionnaires select optional questions + define own questions
- 3** Select dates Decide the exercise period (1week – 3 weeks)
- 4** Activate / See links + share links

# Resources

SELFIE - Discover your school's digital potential

About SELFIE Set-up Results Certification **Resources** Upcoming sessions Data protection School profile

## Resources

Here you can watch a video guide that will help you set up SELFIE for your school.

[Watch video](#)

Below you can download a guide to help you using the SELFIE tool.



**SELFIE guide for school coordinators**  
English (PDF)

[Download](#)

Available languages (32)

# 1 Select education level

## Set-up

Every time you run SELFIE you have to choose: the education levels (eg lower secondary, upper secondary) that will take part, the numbers of teachers, school leaders and students that will take part, the default language and the dates SELFIE will start and end (minimum 1 week, maximum 3 weeks). Once you generate the links no further changes can be made to the set-up.

Select the education level for which you want to set up SELFIE.

### SELFIE 2021-2022, session 2

6 Jan 2022 – 15 Apr 2022

Education level

Enter the number of school leaders, teachers and students of this education level that will participate in this self-reflection exercise.

The overall number of school leaders taking part in this survey\*

In SELFIE, the term school leaders includes formal leadership roles (for example school heads/principals and deputies). It can also include other leadership or management roles, e.g., ICT coordinators; librarians; subject heads; career guidance leaders or other roles that teachers may have in addition to their main teaching role.

Overall number of teachers\*

The term teachers is used here in its broadest sense, including all qualified teachers and other personnel directly involved in teaching students (whole class and/or small groups or individuals). Please do not include teachers who are primarily in a management role - they fall into the school

### Will companies take part in this survey?

Click the box on the right if you would like to involve companies (i.e. in-company trainers)




year (or equivalent if part-time) should be invited to take part. Teachers with

Below you can select which of the companies that are currently enabled for your school will participate in this self-reflection. You can click on the "Register companies" button below to add companies to your school and automatically add them to the self-reflection.

### List of companies\*

Select one option

Add

Register company >

In this survey. For primary schools, this means students aged 9 years and (for instance lower secondary schools) all grades/year groups can take part.




Cancel

Save set-up

-company trainers)

Cancel

Save set-up

2

## Customise the questionnaires

### > Collaboration and Networking

#### Synergies for Blended Learning

##### School Leader

In our school, we collaborate with other schools or organisations to support the use of digital technologies

Show choices

Show help text

##### Teacher

In our school, we collaborate with other schools or organisations to support the use of digital technologies

Show choices

Show help text

##### Student

Question not applicable for this profile

##### In-company Trainer

In our company, we collaborate with other schools or organisations to support the use of digital technologies

Show choices

Show help text

### Add custom statement

Create here a custom question for the survey of the selected education level. Please provide the statement and help text and indicate which group should answer (school leaders, teachers, students or a mix, but at least one is mandatory). Make sure the question/statement works with the following rating scale:

1	2	3	4	5	N/A
Strongly disagree - In my experience, this is not true at all	Disagree	Slightly agree	Agree	Strongly agree - In my experience, this is very true	Not applicable N/A

Education level	Your start and end dates
Upper secondary vocational level	—

School Leader	Teacher	Student	In-company Trainer
Statement	Statement	Statement	Statement
<input type="text"/>	<input type="text"/>	<input type="text"/>	<input type="text"/>
The text of the question	The text of the question	The text of the question	The text of the question

## Customise the questionnaires

In SELFIE some questions are fixed and others optional. You can also choose to create up to ten questions for your school. Note: Once links are generated no further changes can be made to the set-up (participation numbers, customisation, dates)

Education level	Your start and end dates
Upper secondary vocational level	—

### Printable version

Below you can download all SELFIE core and optional questions in a PDF file. Questionnaires for lower and upper secondary schools are identical, as are questions for upper-secondary vocational and adult schools. You can select the language in which you want to download the PDF.

BELFIE 2021-2022, session 2 Questionnaire English (PDF)	Download
Available languages (34)	

Below you can download a file with a list of questions related to blended learning.

BELFIE Blended Learning English (PDF)	Download
Available languages (32)	

### Core statements

The statements shown in this section are common to all schools and cannot be changed

View core statements

### Optional statements

In this section you can select from a list of optional statements to include in SELFIE for your school.

Manage optional statements

### Your own statements

In this section you can create up to ten questions for your school. These can be edited until SELFIE is launched in your school.

Manage your own statements

# Questionnaire

1	2	3	4	5	6	7	8	9	10	11
---	---	---	---	---	---	---	---	---	----	----

## Infrastructure and Equipment

This area is about having adequate, reliable and secure infrastructure (such as equipment, software, information resources, internet connection, technical support or physical space). This can enable and facilitate innovative teaching, learning and assessment practices.

Please, think carefully about the following statements and for each choose from 1 (lowest score) to 5 (highest score). If you hover over a number (1-5) you will see what this number means for that particular statement. If the statement does not apply to you click the 'N/A' icon (Not applicable).

\* In our school, the digital **infrastructure** supports teaching and learning with digital technologies

Choose 5 only if, in your opinion, your school has an extensive, reliable and secure digital infrastructure (for instance classroom equipment, software, internet connection, access to adequate learning resources and programmes) that facilitates innovative teaching and learning.

1	2	3	4	5	N/A
---	---	---	---	---	-----

\* In our school, there are **digital devices for me to use for teaching**

Choose 5 only if, in your opinion, the digital devices available to you (such as whiteboards, video projectors, laptops, tablets, or printers and scanners) are functional, are up-to-date and meet your teaching needs.

1	2	3	4	5	N/A
---	---	---	---	---	-----

3

Select dates

## SELFIE 2021-2022, session 2

📅 6 Jan 2022 – 15 Apr 2022

Education level

Upper secondary vocational level

Feb 2022							Mar 2022						
Mo	Tu	We	Th	Fr	Sa	Su	Mo	Tu	We	Th	Fr	Sa	Su
31	1	2	3	4	5	6	28	1	2	3	4	5	6
7	8	9	10	11	12	13	7	8	9	10	11	12	13
14	15	16	17	18	19	20	14	15	16	17	18	19	20
21	22	23	24	25	26	27	21	22	23	24	25	26	27
28	1	2	3	4	5	6	28	29	30	31	1	2	3
7	8	9	10	11	12	13	4	5	6	7	8	9	10

📅 25 Feb 2022 – 8 Mar 2022

minimum 1 week, maximum 3 weeks.

Automatically, once the self-reflection period you select ends.

Central European Time (CET) of the last day of the time frame selected. After that, no more answers can be

Cancel

Update the dates

4

Activate / See links

## SELFIE 2021-2022, session 2

📅 6 Jan 2022 – 15 Apr 2022

Education level

Upper secondary vocational level



Check all the questionnaires and the dates for the self-reflection exercise before you generate the links. Once links are generated no further changes can be made to the set-up (participation numbers, customisation, dates).

The results will be generated automatically, once the self-reflection period you select ends.

Preview (School Leader)

Preview (Teacher)

Preview (Student)

Preview (In-company Trainer)

Your start and end dates

📅 25 Feb 2022 – 8 Mar 2022

Cancel

Generate links



# Quick tour through the questions

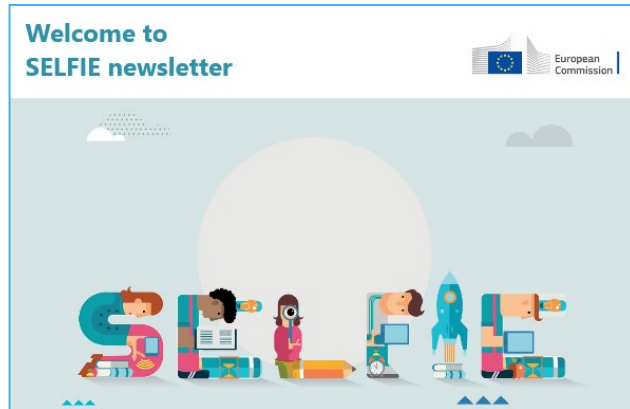
- Students



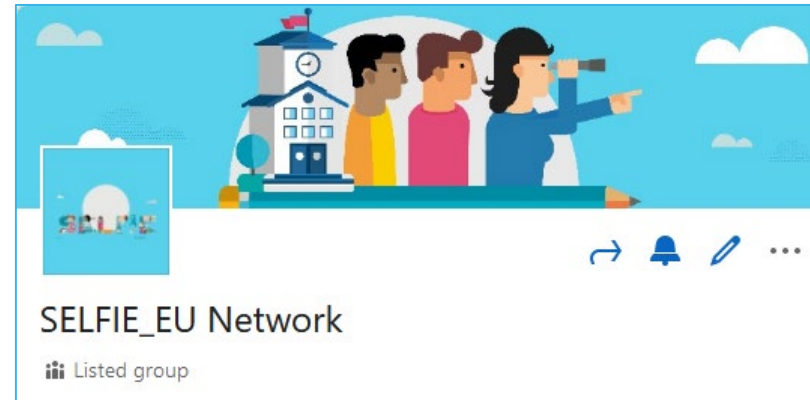
- Teachers



# SELFIE in social media



Subscribe to  
**SELFIE newsletter**



Join our LinkedIn group:  
**SELFIE\_EU NETWORK**



Website: <https://education.ec.europa.eu/self-reflection-tools>

Email: [JRC-EAC-SELFIE-TOOL@ec.europa.eu](mailto:JRC-EAC-SELFIE-TOOL@ec.europa.eu)

Twitter: **#SELFIE\_EU**

# Thank you.

cesar.herrero@ec.europa.eu  
*@sirCesarHerrero*



© European Union 2023

Unless otherwise noted the reuse of this presentation is authorised under the [CC BY 4.0](https://creativecommons.org/licenses/by/4.0/) license. For any use or reproduction of elements that are not owned by the EU, permission may need to be sought directly from the respective right holders.